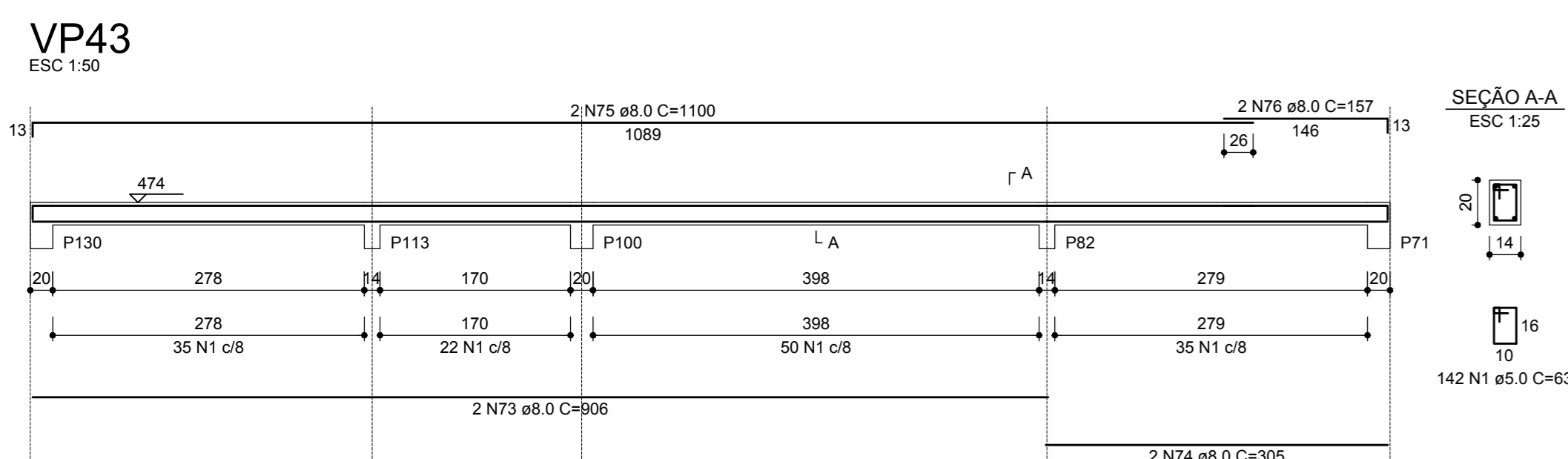
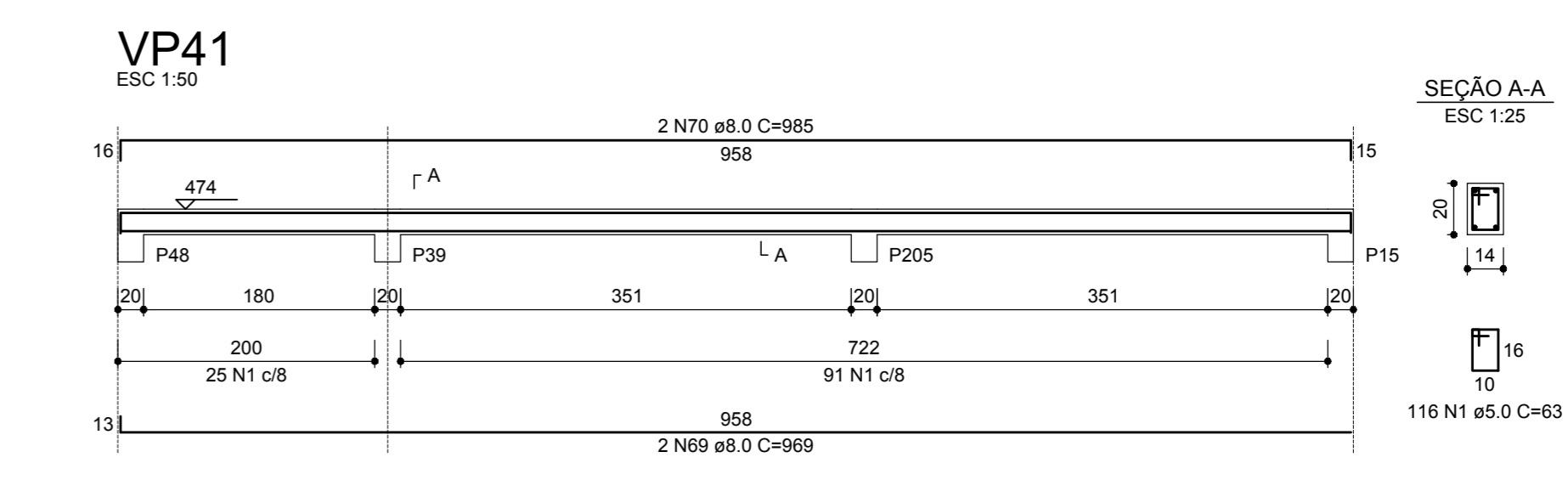
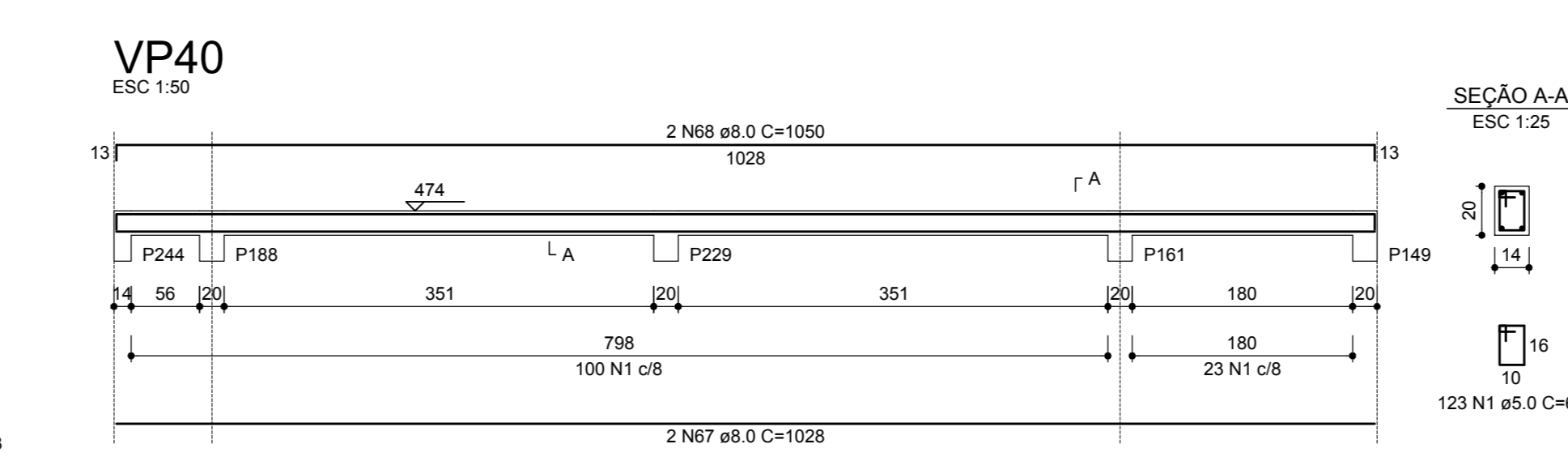
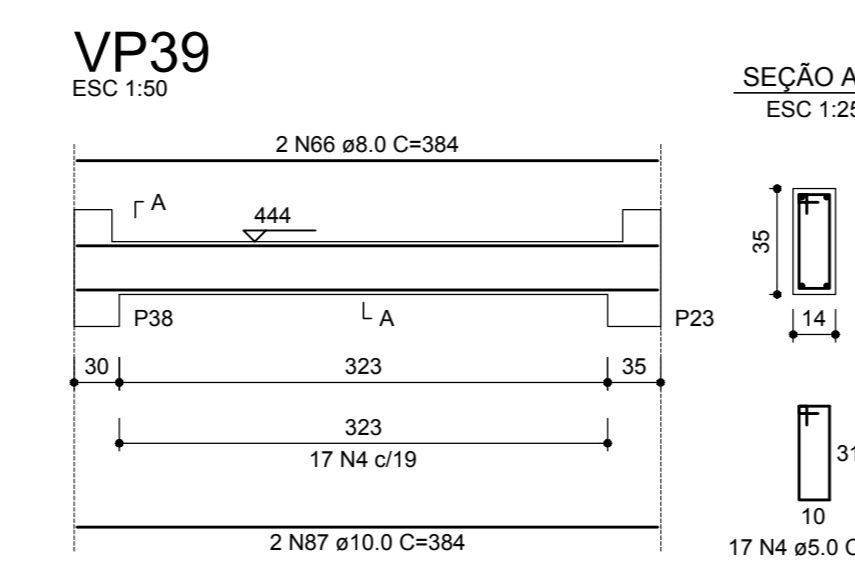
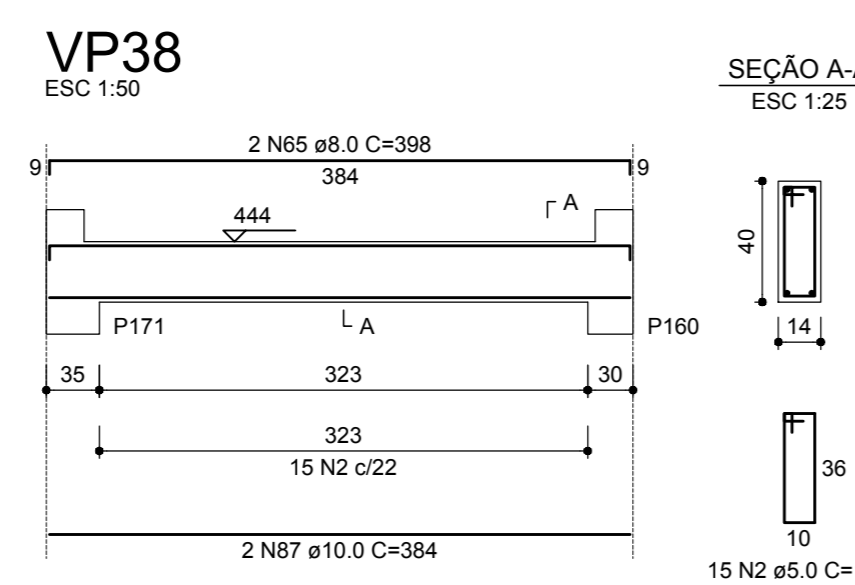
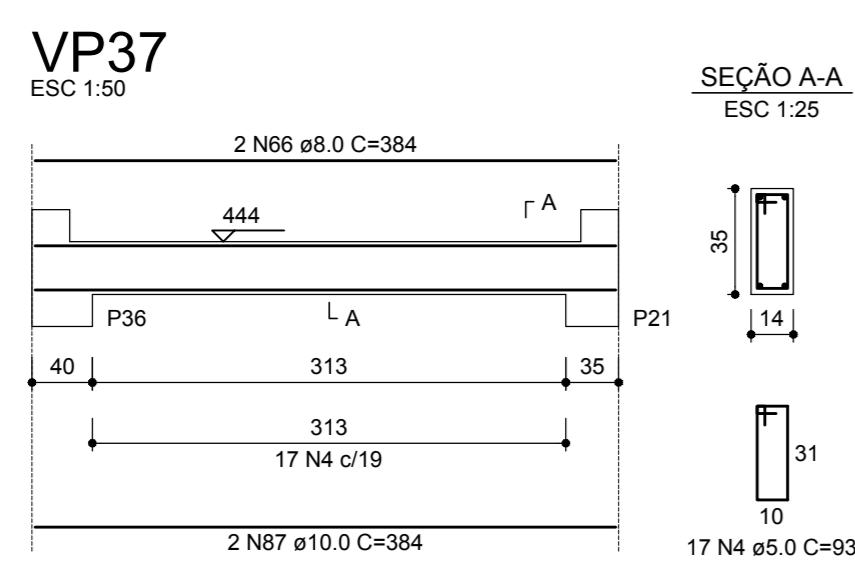
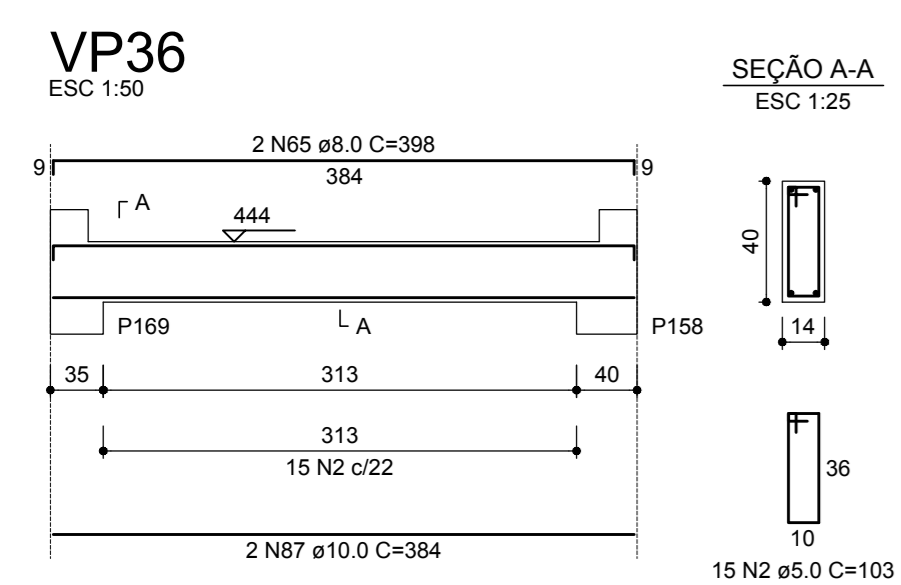
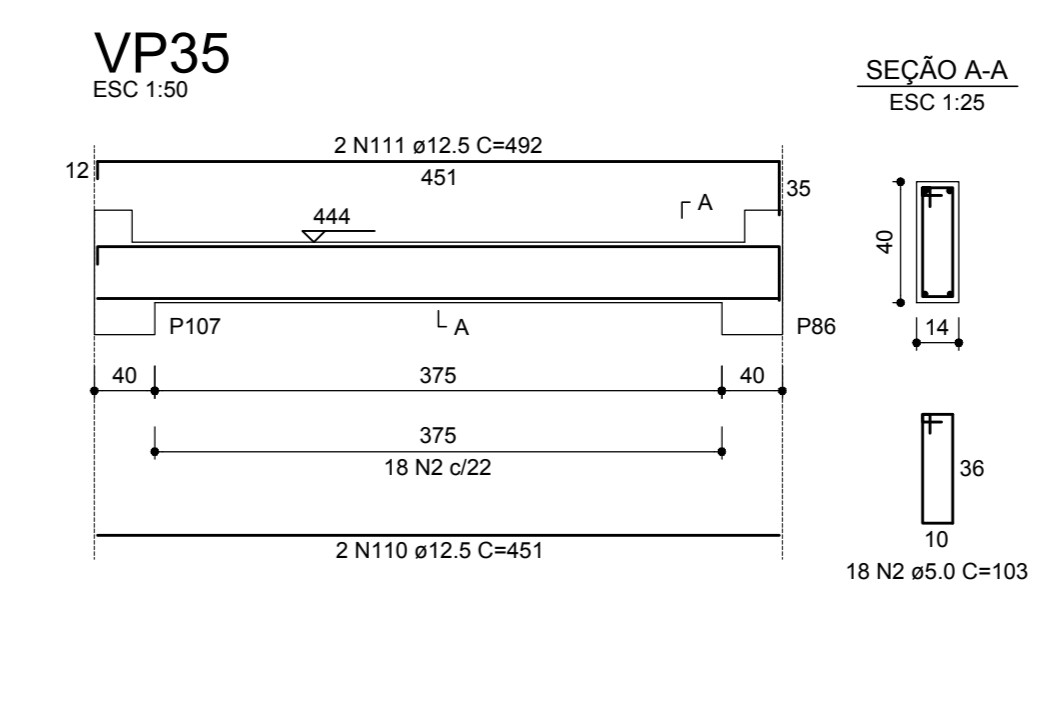
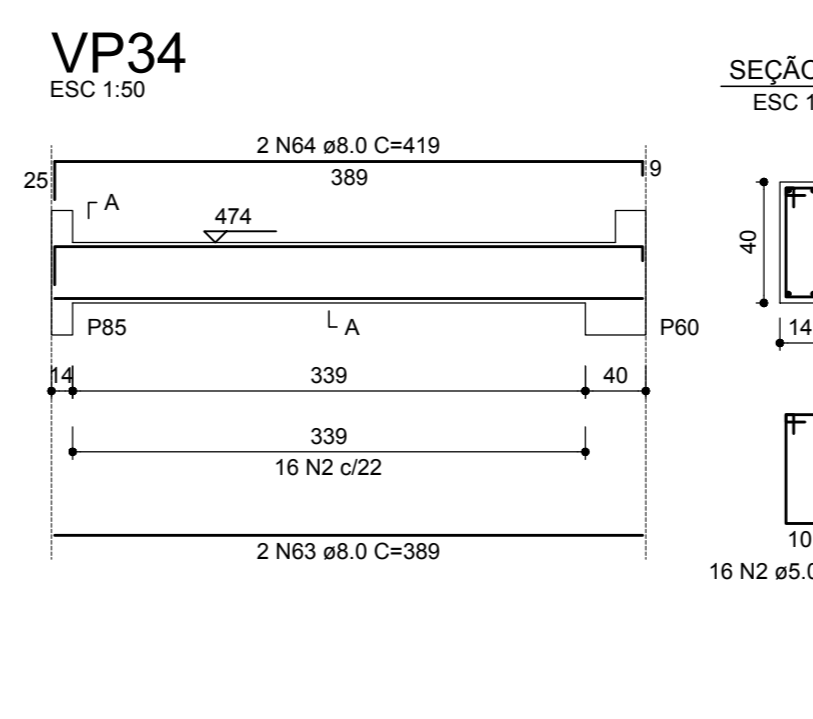
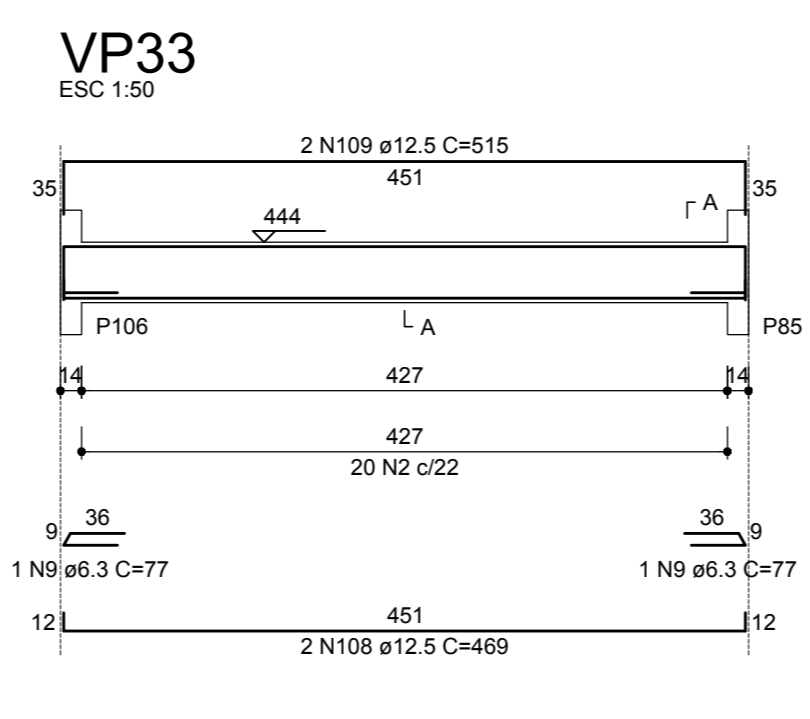
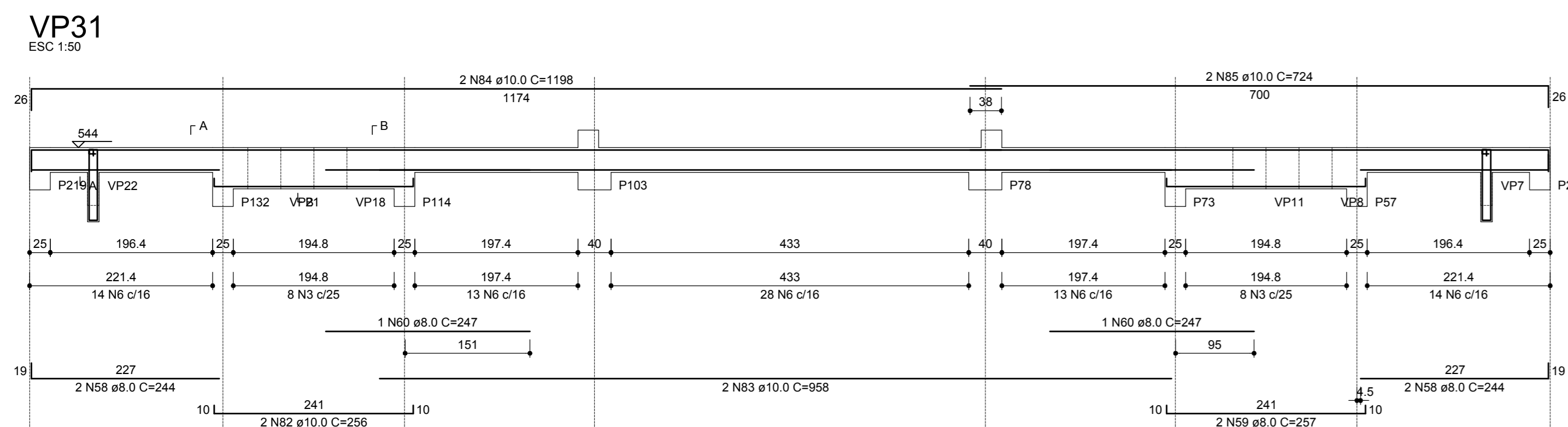
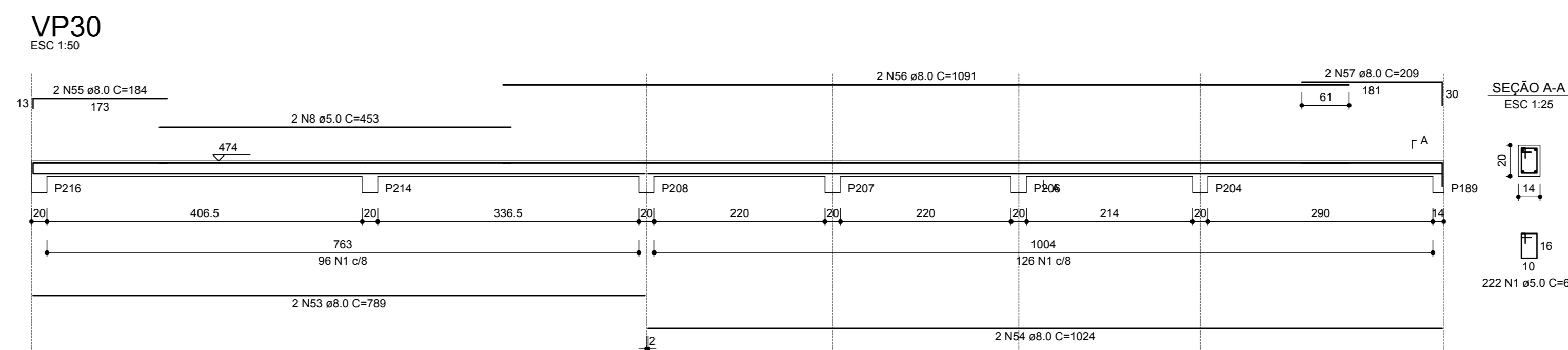
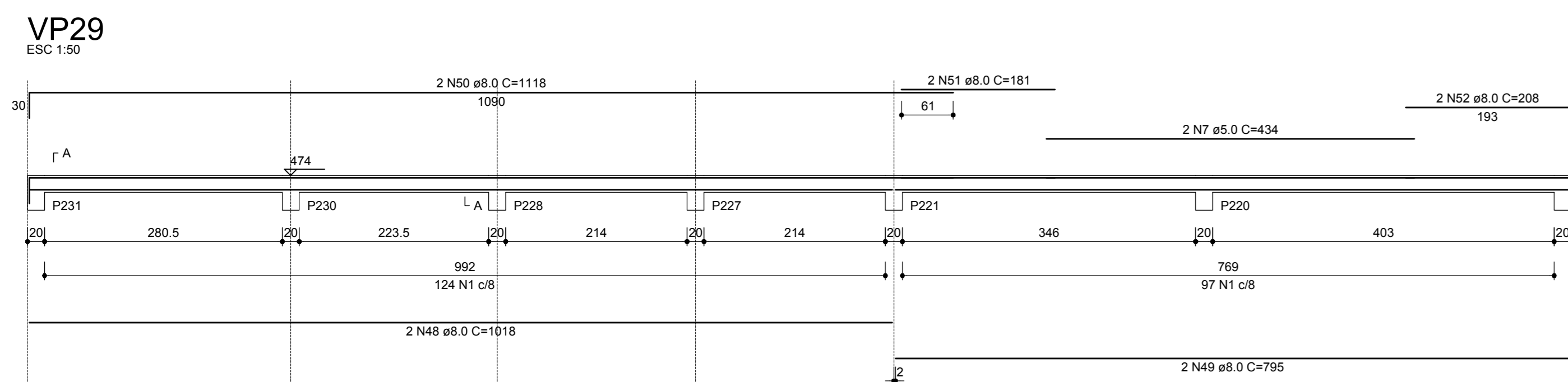
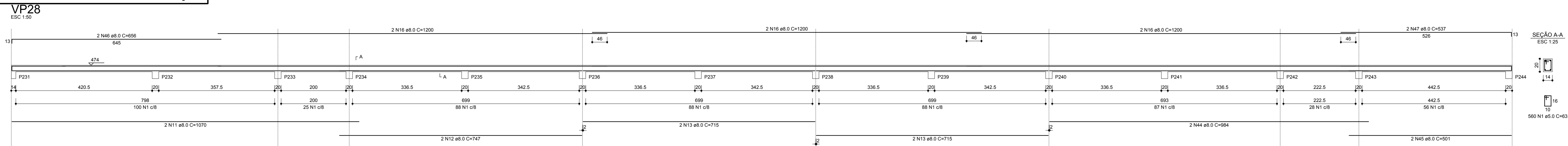


VIGAS PLATIBANDA 2/2



RESUMO DO AÇO

AÇO	DIAM (mm)	C. TOTAL (m)	PESO + 5% (kg)
CABO	6.3	9.6	2.5
	8.0	1148.6	476.3
	10.0	185	119.7
	12.5	565	571.5
	5.0	2859	462.7
PESO TOTAL (kg)			
CASO		1170	
CABO		462.7	

Volume de concreto (C-25) = 20.31 m³
Área de forma = 331.14 m²

OBRA: E.M.E.B BARRA BONITA -SC
BARRA BONITA SC/SC

ÁREA: 2.134,12m²

ESCALA: 1/25

PROJETO: ESTRUTURAL

REFERENCIAL: VIGAS PLATIBANDA 2/2

DATA: MAIO DE 2022

PROPRIETÁRIO: MUNICÍPIO DE BARRA BONITA
CNPJ: 01.612.527/0001-30

PROJETO: PROJ./2022/BARRA

RESPONSÁVEL TÉCNICO: CLEITON LUIZ BANFI
ARQUITETO E URBANISTA
CAU Nº A108026-1

FRANCA: E21