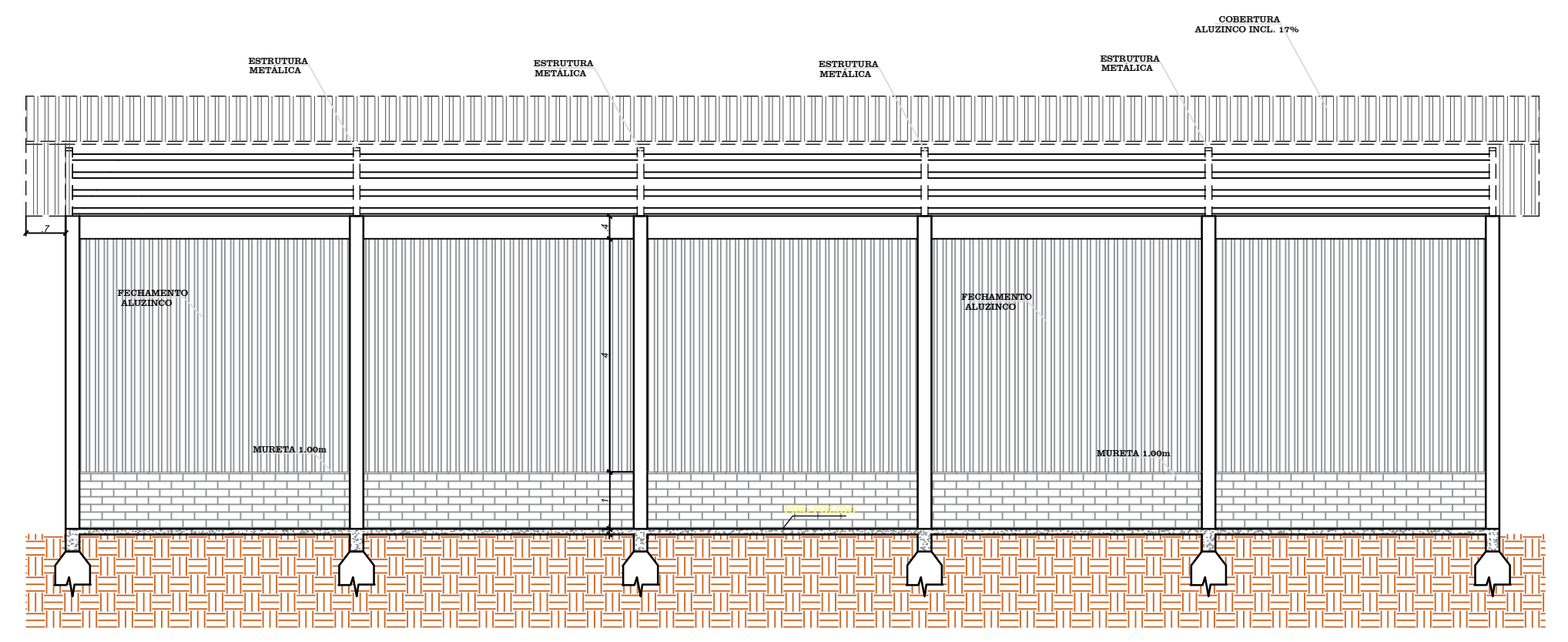
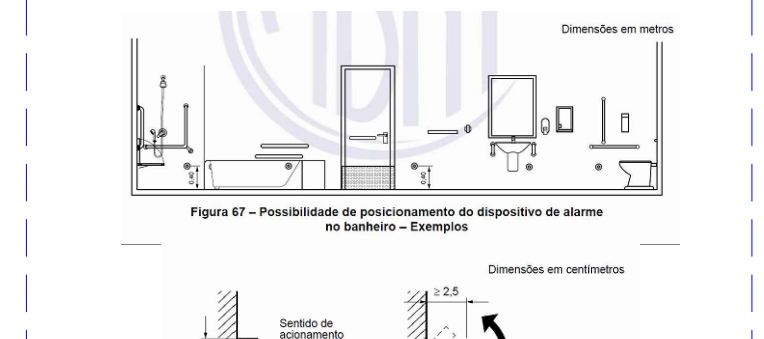
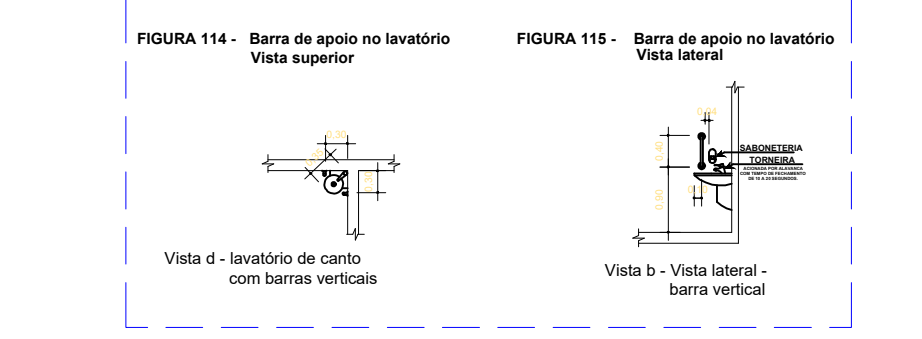
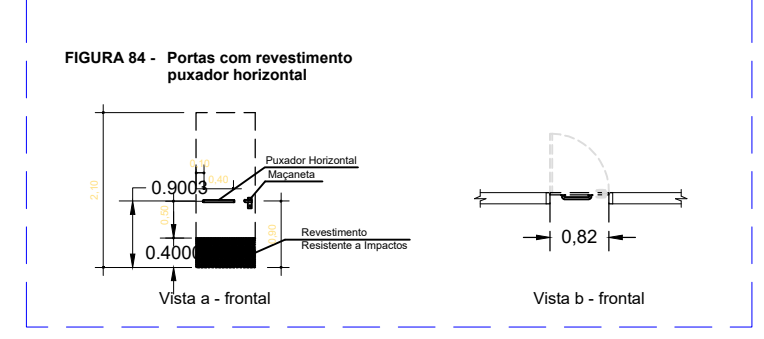
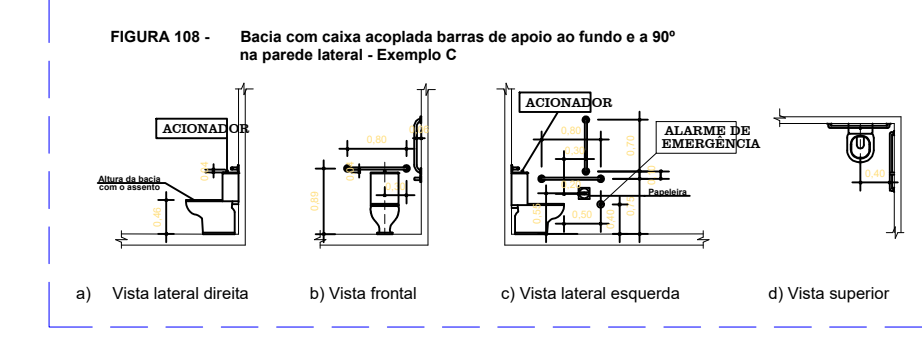
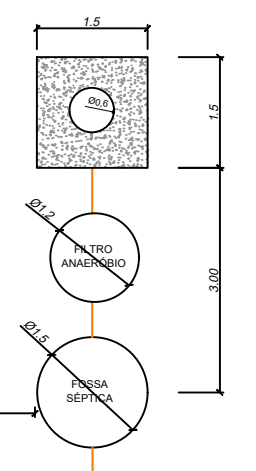
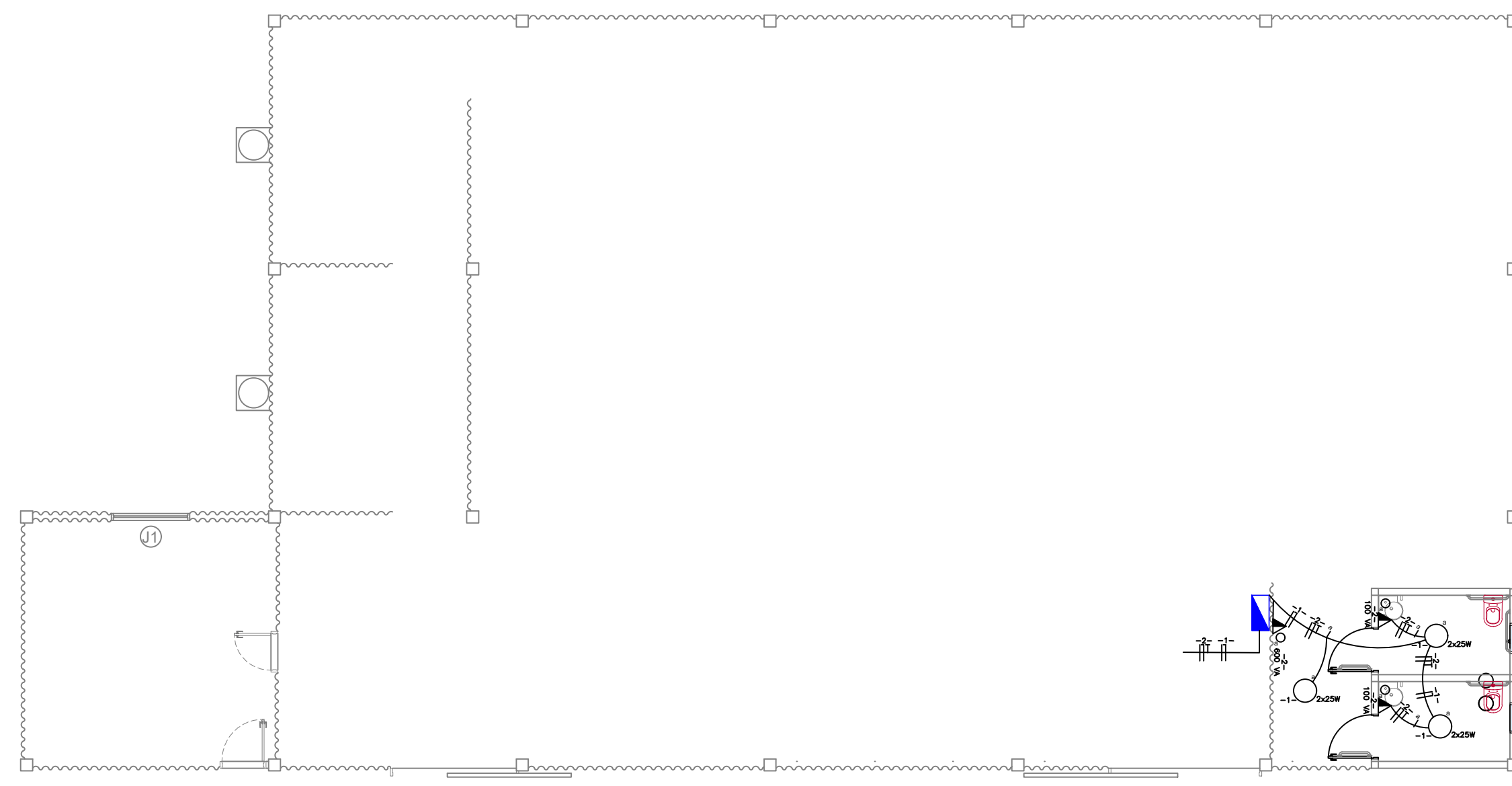


5 PLANTA BAIXA HIDROSSANITÁRIO
ESCALA 1:50

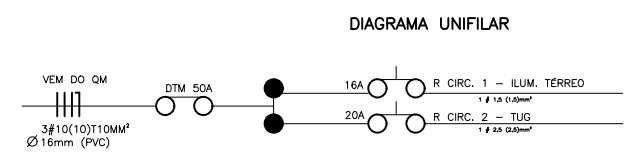
DADOS CÁLCULO N = 10 (Pessoas) C = 70 (Litros/pessoa/dia) T = 1,00 (Dia) K = 94 L = 6,30	CÁLCULO DA FOSSA SÉPTICA $V = 1.000 + N(C \times T + K \times L)$ $V = 1.000 + 10(70 \times 1 + 94 \times 6,30)$ $V = 1.000 + 10(98,20)$ $V = 1.000 + 982$ $V = 1.982,00$ litros
CÁLCULO DO FILTRO ANAERÓBIO $V = 1,6 \times N \times C \times T$ $V = 1,6 \times 10 \times 70 \times 1,00$ $V = 1.120,00$ litros	CÁLCULO DO SUMIDOURO $A = N \times C \times T \times 60$ $A = \frac{10 \times 70 \times 1}{60}$ $A = 11,66$ m ³



6 CORTE A-A
ESCALA 1:50



8 PLANTA BAIXA ELÉTRICO
ESCALA 1:50

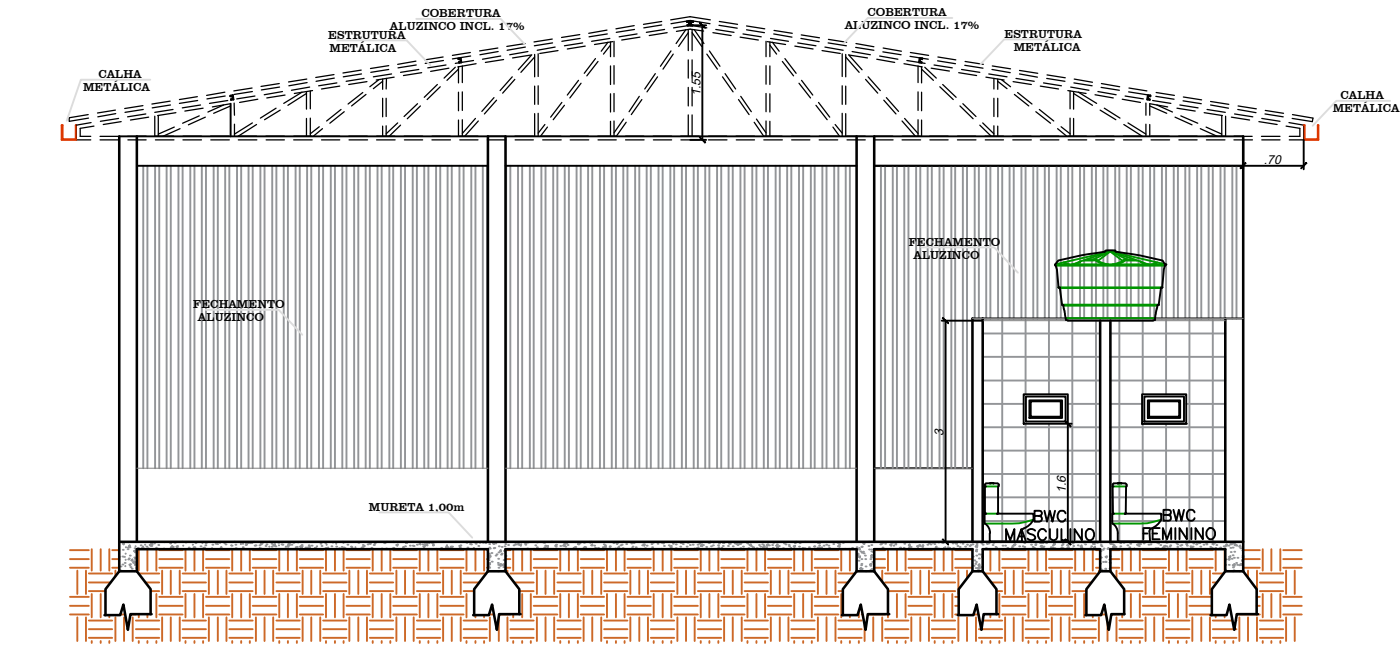


LEGENDA

- Luminária p/ lâmpada fluorescente circular
- ▶ Tomada alta a 1,80m do piso
- ▽ Tomada baixa a 0,30m do piso
- ▶ Tomada média a 1,20m do piso

Quadro de Cargas (QM)

Circuito	Lâmpada LED (W)				Pot. total (VA/W)	Nº de pontos	Seção (mm2)	Disj (A)
	9	18	22	100				
1-ILUMINAÇÃO			3	600	1500	5500	66	3 1,5 16
2-TUG'S			2	1		700	3	2,5 20



7 CORTE B-B
ESCALA 1:50

PREFEITURA DE BARRA BONITA SC

Projeto: Arquitetônico	Escala: indicada	Data: 09/01/2023	Prancha:
Área: 410,86 m ²	Projetista: ISABELA CAROLINE GAGLIOTTO GALVAN CREA/SC 178533-4		
Obra: Barracão Industrial	Arquivo: 02		

A3